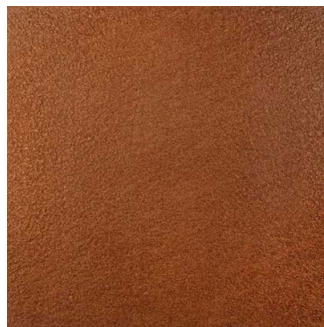




## Latina Stone Brown (PO)

**Size:** 600X600 mm | **Design:** Stone | **Finish:** Lapato Finish in Glazed Vitrified Tiles Body | **Series:**



Front View



Scale View

### Packaging Details

Size	No. of tiles in box	Coverege Area	
		sq/mtr	sq/ft
600X600 mm	4.0	1.44	15.5

### Technical Specification

Sr.No.	Test Description	Standard Test Method	ISO 13006 : 2018 E Specification Bia	Nitco's Value
1	Length and Width	ISO 10545-2 / EN 98	± 0.3 % (max +/-1.0 mm)	± 0.10%
2	Thickness	ISO 10545-2 / EN 98	± 5.0 % (max +/-0.5 mm )	± 5%
3	Straightness of sides	ISO 10545-2 / EN 98	± 0.3 % (max +/-0.8mm)	± 0.10%
4	Rectangularity	ISO 10545-2 / EN 98	± 0.3 % (max +/-1.5 mm )	± 0.15%
5	Surface flatness	ISO 10545-2 / EN 98	± 0.4 % ( max +1.8 mm )	± 0.20%
6	Surface Quality	ISO 10545-2 / EN 98	95% free from visible defects	> 95% free from visible defects
7	Water Absorption	ISO 10545-3 / EN 99	< 0.5%, Max 0.6%	< 0.08%
8	Breaking Strength, N	ISO 10545-4 / EN 100	Min 1300 N	Min. 1300 N
9	Modulus of Rupture (MOR), N/mm <sup>2</sup>	ISO 10545 -4 / EN 100	> 35	> 35 N
10	Abrasion Resistance	ISO 10545-7 / EN 154	Report abrasion class and cycles passed	PEI III for Glossy PEI IV for Matt
11	Thermal Shock Resistance	ISO 10545-9 / EN 104	Resistant to 10 cycle	Resistant
12	Crazing Resistance	ISO 10545-11 / EN 105	No Crazinge	Resistant
13	Resistance to Acids, Alkalies and Chemicals (Except HF Acid)	ISO 10545-13 / EN 106	No Visible effectct	No Visible effectct
14	Resistance to staining	ISO 10545-14	Min 3	Min Class 4
15	Gloss Value (For PGVT)			> 80

WANT TO GET IN TOUCH WITH US?

Toll Free: 1800 266 4826 | Email: [marketing@nitco.in](mailto:marketing@nitco.in)