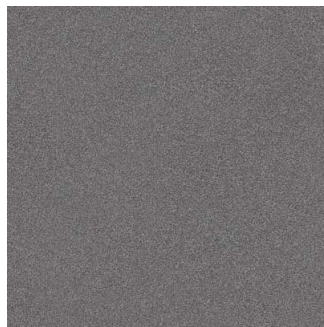




Stanstead Ebony 60 M

Size: 600X600 mm | **Design:** Stone | **Finish:** Matte Finish in Vitrified DCH Body | **Series:**



Front View

Packaging Details

Size	No. of tiles in box	Coverege Area	
		sq/mtr	sq/ft
600X600 mm	4.0	1.44	15.5

Technical Specification

Sr.No.	Properties	CEN Code	Standard Test Method	ISO13006:2018 Specification	Nitco's Value
1	Deviation in Length %	EN 98	ISO 10545 - 2	± 0.3 % (Max ± 1.0 mm)	± 0.1%
2	Deviation in Thickness %	EN 98	ISO 10545 - 2	± 5.0 % (Max ± 0.5 mm)	± 5.0%
3	Straightness of Edge %	EN 98	ISO 10545 - 2	± 0.3 % (Max ± 0.8mm)	± 0.10%
4	Diagonal Variation % (Rectangularity)	EN 98	ISO 10545 - 2	± 0.3 % (Max ± 1.5 mm)	± 0.10%
5	Surface flatness	EN 98	ISO 10545 - 2	± 0.4 % (Max ± 1.8 mm)	± 0.20%
	a. Centre curvature				
	b. Edge curvature				
6	c. Warpage				± 0.20%
6	Surface Quality	EN 98	ISO 10545 - 2	Min 95% free from any visible defects	Min 95% free from any visible defects
7	Water Absorption % By WT.	EN 99	ISO 10545 - 3	< 0.5	< 0.08
8	Breaking Strength, N	EN 100	ISO 10545-4	Min. 1300 N	Min. 1300 N
9	Modulus of Rupture in N / mm ²	EN 100	ISO 10545 - 4	> 35	> 35
10	Thermal Shock Resistance	EN 104	ISO 10545 - 9	No Visible Defects	Resistant
11	Chemical Resistance (Except HF Acid)	EN 106	ISO 10545 - 13	No Visible Effect	No Visible Effect
12	Resistance To Stain		ISO 10545 - 14	Manufacture To State Class	Resistant
13	MOH Scratch Hardness	EN 101		Min 5	5
14	Gloss Value			Min 75	> 80

WANT TO GET IN TOUCH WITH US?

Toll Free: 1800 266 4826 | Email: marketing@nitco.in