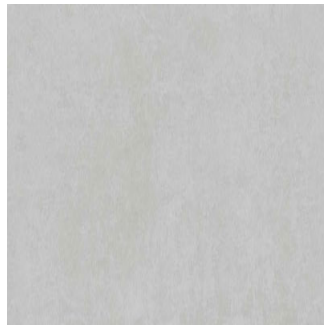




Portico Grey - N

Size: 800X1600 mm | **Design:** Stone | **Finish:** Matte Finish in Glazed Vitrified Tiles Body | **Series:**



Front View



Scale View

Packaging Details

| Size | No. of tiles in box | Coverege Area | |
|-------------|---------------------|---------------|-------|
| | | sq/mtr | sq/ft |
| 800X1600 mm | 2.0 | 2.56 | 27.56 |

Technical Specification

| Sr.No. | Test Description | Standard Test Method | ISO 13006 : 2018 E Specification | Nitco's Value | 1600 mm side | 800 mm side |
|--------|--|-----------------------|---|------------------------------------|--------------|-------------|
| 1 | Length and Width | ISO 10545-2 / EN 98 | ± 0.3 % (max +/-1.0 mm) | ± 0.06% | | ± 0.10% |
| 2 | Thickness | ISO 10545-2 / EN 98 | ± 5.0 % (max +/-0.5 mm) | ± 5% | | |
| 3 | Straightness of sides | ISO 10545-2 / EN 98 | ± 0.3 % (max +/- 0.8mm) | ± 0.05% | | ± 0.10% |
| 4 | Rectangularity | ISO 10545-2 / EN 98 | ± 0.3 % (max +/-1.5 mm) | ± 0.08% | | ± 0.10% |
| | Surface flatness | ISO 10545-2 / EN 98 | | | | |
| 5 | a. Centre curvature | ISO 10545-2 | ± 0.4 % (max +1.8 mm) | ± 0.10% | | |
| | b. Edge curvature | ISO 10545-2 | | ± 0.10% | | ± 0.15% |
| | c. Warpage | ISO 10545-2 | | ± 0.10% | | |
| 6 | Surface Quality | ISO 10545-2 / EN 98 | 95% free from visible defects | > 95% free from visible defects | | |
| 7 | Water Absorption | ISO 10545-3 / EN 99 | < 0.5%, Max 0.6% | < 0.08% | | |
| 8 | Breaking Strength, N | ISO 10545-4 / EN 100 | Min 1300 N | Min. 1300 N | | |
| 9 | Modulus of Rupture (MOR), N/mm ² | ISO 10545 -4 / EN 100 | > 35 | > 35 N | | |
| 10 | Abrasion Resistance | ISO 10545-7 / EN 154 | Report abrasion class and cycles passed | PEI III for Glossy PEI IV for Matt | | |
| 11 | Thermal Shock Resistance | ISO 10545-9 / EN 104 | Resistant to 10 cycle | Resistant | | |
| 12 | Crazing Resistance | ISO 10545-11 / EN 105 | No Crazing | Resistant | | |
| 13 | Resistance to Acids, Alkalies and Chemicals (Except HF Acid) | ISO 10545-13 / EN 106 | No Visible effect | No Visible effect | | |
| 14 | Resistance to staining | ISO 10545-14 | Min 3 | Min Class 4 | | |
| 15 | Gloss Value (For PGVT) | | | > 80 | | |

WANT TO GET IN TOUCH WITH US?

Toll Free: 1800 266 4826 | Email: marketing@nitco.in