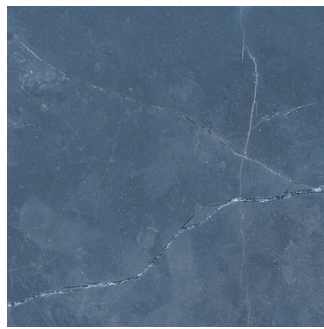




## Crust Vintal Blue

**Size:** 300X300 mm | **Design:** Marble | **Finish:** Satin Matte Finish in Ceramic Floor Body | **Series:** Crust New



Front View



Scale View

### Packaging Details

Size	No. of tiles in box	Coverege Area	
		sq/mtr	sq/ft
300X300 mm	9.0	0.81	8.72

### Technical Specification

Sr.No.	Test Description	Standard Test Method	ISO13006:2018 Specification BIIa	Nitco's Value Non Rectified
1	Length and Width	ISO 10545-2 / EN 98	$\pm 0.6 \% ( \text{Max} \pm 2.0 \text{ mm} )$	$\pm 0.4\%$
2	Thickness	ISO 10545-2 / EN 98	$\pm 5.0 \% ( \text{Max} \pm 0.5\text{mm} )$	$\pm 5.0\%$
3	Straightness of sides (%)	ISO 10545-2 / EN 98	$\pm 0.5 \% ( \text{Max} \pm 1.5 \text{ mm} )$	$\pm 0.3\%$
4	Rectangularity	ISO 10545-2 / EN 98	$\pm 0.6 \% ( \text{Max} \pm 2.0 \text{ mm} )$	$\pm 0.3\%$
5	Surface Flatness (%)	ISO 10545-2 / EN 98	$\pm 0.5 \% ( \text{Max} \pm 2.0 \text{ mm} )$	$\pm 0.30\%$
6	Surface Quality	ISO 10545-2 / EN 98	95% free from visible defects	>95% free from visible defects
7	Water Absorption	ISO 10545-3 / EN 99	3% < E 6%	3-6%
8	Breaking Strength, N	ISO 10545-4 / EN 100	Min 1000 N	7.5mm, 1000N< 7.5mm, 600N
9	Modulus of Rupture (MOR), N/mm <sup>2</sup>	ISO 10545-4 / EN 100	>22	>22
10	Abrasion Resistance (PEI III, IV, V)	ISO 10545-7 / EN 154	As Specified by Manufacture	As Specified
11	Thermal Shock Resistance	ISO 10545-9 / EN 104	Resistant to 10 cycle	Resistant
12	Crazing Resistance	ISO 10545-11 / EN 105	No Crazing	Resistant
14	Resistance to Acids, Alkalies and Chemicals (Except HF Acid)	ISO 10545-13 / EN 106	No Visible effect	No Visible effect

---

WANT TO GET IN TOUCH WITH US?

Toll Free: 1800 266 4826 | Email: [marketing@nitco.in](mailto:marketing@nitco.in)