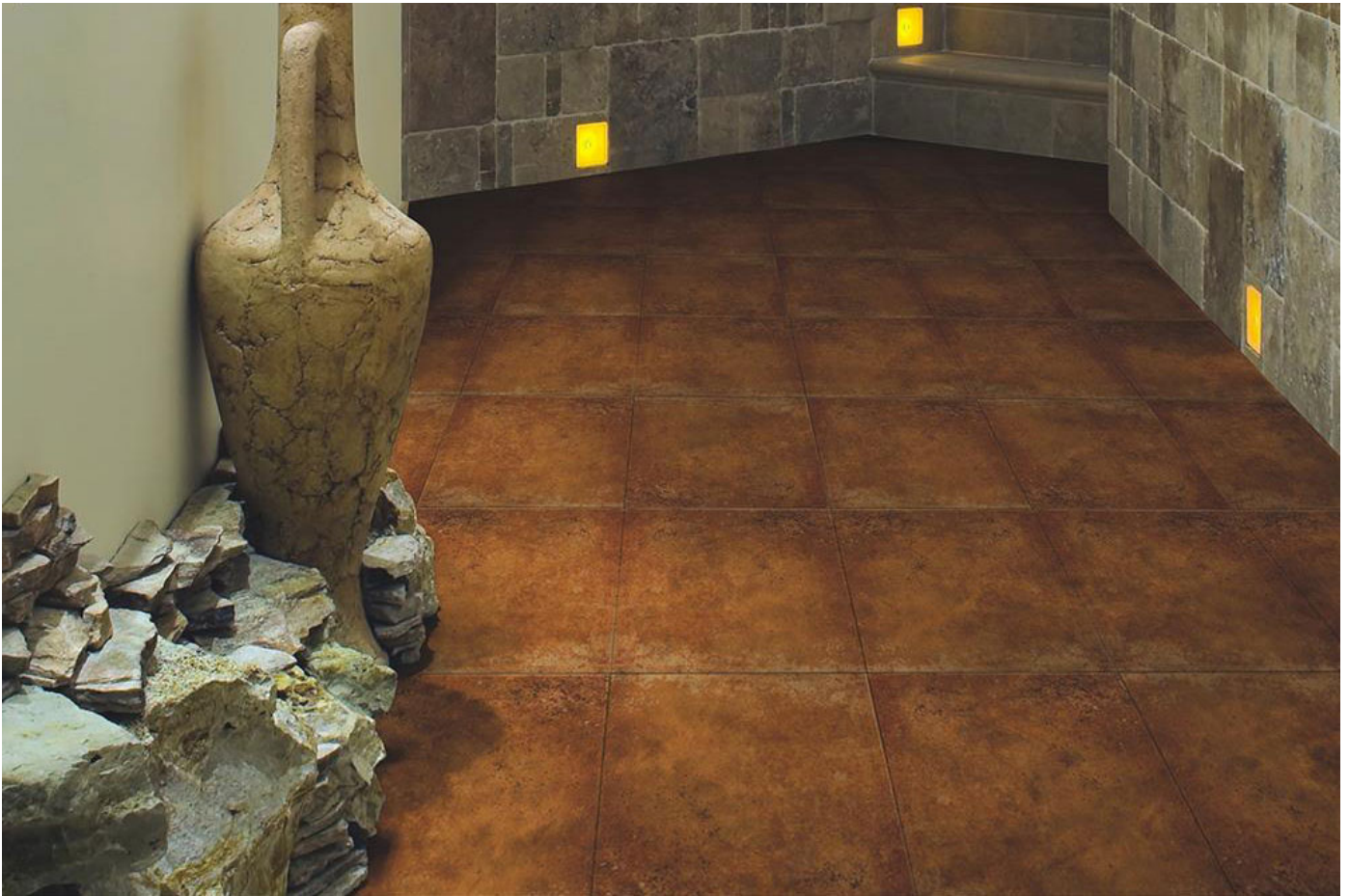


NITCO



COTTO TERRACOTTA

Size: 300 X 300 mm | **Design:** Natural | **Finish:** Rustic Finish in Ceramic Floor Body | **Series:** Ceramic



Front View



Scale View

Packaging Details

Size	No. of tiles in box	Coverage Area		Thickness
		sq/mtr	sq/ft	
300 X 300 mm	12.00	1.08	11.63	8.00

Technical Specification

Sr.No.	Test Description	Standard Test Method	International Standard	Nitco's Value Non Rectified
1	Length and Width	ISO 10545-2 / EN 98	$\pm 0.6 \% (\text{Max} \pm 2.0 \text{ mm})$	$\pm 0.5\%$
2	Thickness	ISO 10545-2 / EN 98	$\pm 5.0 \% (\text{Max} \pm 0.5\text{mm})$	$\pm 5.0\%$
3	Straightness of sides	ISO 10545-2 / EN 98	$\pm 0.5 \% (\text{Max} \pm 1.5 \text{ mm})$	$\pm 0.5\%$
4	Rectangularity	ISO 10545-2 / EN 98	$\pm 0.6 \% (\text{Max} \pm 2.0 \text{ mm})$	$\pm 0.5\%$
5	Surface flatness	ISO 10545-2 / EN 98	$\pm 0.5 \% (\text{Max} \pm 2.0 \text{ mm})$	$\pm 0.30\%$
6	Surface Quality	ISO 10545-2 / EN 98	95% free from visible defects	> 95% free from visible defects
7	Water Absorption	ISO 10545-3 / EN 99	3% < E 6%	3-6%
8	Breaking Strength, N	ISO 10545-4 / EN 100	Min 1000 N	7.5mm, 1000N
9	Modulus of Rupture (MOR), N/mm ²	ISO 10545-4 / EN 100	> 20	> 30
10	Abrasion Resistance (PEI III, IV, V)	ISO 10545-7 / EN 154	As Specified by manufacture	As Specified
11	Thermal Shock Resistance	ISO 10545-9 / EN 104	Resistant to 10 cycle	Resistant
12	Crazing Resistance	ISO 10545-11 / EN 105	No Crazing	Resistant
13	Resistance to Acids, Alkalies and Chemicals (Except HF Acid)	ISO 10545-13 / EN 106	No Visible effect	No Visible effect

WANT TO GET IN TOUCH WITH US?

Toll Free: 1800 266 4826 | Email: marketing@nitco.in