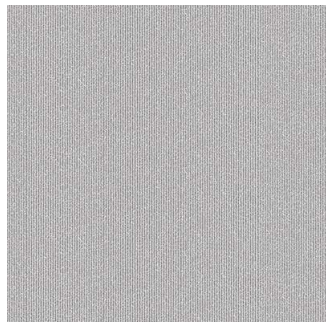


NITCO

Crust 45

Size: 300 X 300 mm | **Design:** Natural | **Finish:** Glossy Finish in Ceramic Wall Body | **Series:** Crust



Front View



Scale View

Packaging Details

Size	No. of tiles in box	Coverge Area		Thickness
		sq/mtr	sq/ft	
300 X 300 mm	12.00	1.08	11.63	

Technical Specification

Sr.No.	Test Description	Test Method	ISO 13006:1998 E Specification	Nitco's Specification
1	Deviation in Length (%)	ISO 10545 - 2 / EN 98	$\pm 0.6 \% (\text{Max } \pm 2.0 \text{ mm})$	$\pm 0.15 \%$
2	Deviation in Thickness (%)	ISO 10545 - 2 / EN 98	$\pm 10.0 \% (\text{Max } \pm 0.5 \text{ mm})$	$\pm 5.0 \%$
3	Straightness of Edge (%)	ISO 10545 - 2 / EN 98	$\pm 0.5 \% (\text{Max } \pm 1.5 \text{ mm})$	$\pm 0.3 \%$
4	Diagonal Variation (%) (Rectangularity)	ISO 10545 - 2 / EN 98	$\pm 0.5 \% (\text{Max } \pm 2.0 \text{ mm})$	$\pm 0.15 \%$
5	Surface Flatness (%)	ISO 10545 - 2 / EN 98	+ 0.5 , -0.3 (Max +2.0 mm and -1.5 mm)	+ / - 0.25 %
6	Surface Quality (%)	ISO 10545 - 2 / EN 98	Min 95% free from any Visible defects	More than 95 % free from any Visible defects
7	Water Absorption (%) By Wt.	ISO 10545 - 3 / EN 99	10.0 %	10-20 %
8	Modulus of Rupture In N / mm ²	ISO 10545 - 4 / EN 100	10	17
9	Thermal Shock Resistance	ISO 10545 - 9 / EN 104	No Visible defects	Resistance
10	Chemical Resistance (Except HF Acid)	ISO 10545 - 13 / EN 106	No Visible defects	No Visible defects
11	Resistance to Stain	ISO 10545 - 14	Manufacturer to State Class	Min. Class 3
12	MOH Scratch Hardness	EN 101	Min 4	4
13	Crazing Resistance	ISO 10545 - 14 / EN 105	No Crazing	Resistance
14	Abrasion Resistance	ISO 10545 - 7 / EN 154	PEI - II for Glossy to III for Matte	PEI - II for Glossy to III for Matte

WANT TO GET IN TOUCH WITH US?

Toll Free: 1800 266 4826 | Email: marketing@nitco.in